

Los Angeles



THEATRE □

## Robbin, From The Hood

By **Samantha Simmonds-Ronceros** -  
10/16/2024



*Enrike Llamas, iesha m. daniels and William L. Warren. PHOTO CREDIT: Lizzy Kimball.*

[[NoHo Arts District](#), CA] – A NoHo Arts [theatre review](#) of the Road Theatre Company’s *Robbin, From The Hood*, written by Marlow Wyatt and directed by Chuma Gault, running through November 17.

***ROBBIN, FROM THE HOOD IS A PLAY ABOUT OPPORTUNITIES. THOSE WHO HAVE MANY AND THOSE WHO HAVE FEW. AND HOW TO MAKE THE MOST OF ONE, IN YOUR OWN, VERY PARTICULAR WAY.***



*Joshua R. Lamont and William L. Warren. PHOTO CREDIT: Lizzy Kimball.*

Robbin is born and raised in “the hood.” Her parents died when she was a baby and she lived with her grandfather and uncle, when he was not in prison, in a housing complex in the Bronx.

Robbin is a math genius and her prowess has been noticed by Margret, an executive at a massive global tech company who has been charged by her boss to insert some 'diversity' and local 'out-reach' into their corporate portfolio.



*iesha m. daniels and Enrike Llana. PHOTO CREDIT: Lizzy Kimball.*

Robbin and her best friend Juan are chosen through what they think is a simple application process at their high school. But Margret knew Robbin's mother and admired her neighborhood activism, so she picks Robbin out to mentor not knowing Robbin's true brilliance with numbers and her intense ambition.



*Geri-Nikole-Love and iesha m. daniels. PHOTO CREDIT: Lizzy Kimball.*

Once in their summer internships, the two friends each follow their own paths. Juan loves his suited postroom responsibilities and Robbin excels in accounting. But the more Robbin

discovers about the company she works for the more she realizes that capitalism unfettered is much more than discriminatory...it's dangerous.

What a brilliant play. Clever, emotional, nuanced, unexpected and above all, it tells a story that transcends race and money and politics.

The 1% truly is a cabal unto themselves, the longer they exist in their castles in the sky the worse it all becomes. People like Robbin hold the key to all our freedom. Challenging the status quo takes courage and sacrifice that few are willing to take...but Robbin is willing, able and motivated.



*Rob Nagle and Geri Nikole-Love. PHOTO CREDIT: Lizzy Kimball.*

The performances are profoundly good. Each and every one of these fine actors works hard to make it seem as if they are hardly working. The set is exquisite, taking us effortlessly from home to work to school to street instantly and quietly, making the story the center as well as these incredible characters.

It's a story so worth telling and with characters fully formed, real, human and hopeful. This is not an aching, angry, vengeful kind of play. Although there may be every reason for revenge, it's not in this story. There is justice and a kind of poetic punishment dealt with and also a deep sense of the altering of our path forward. It's in the zeitgeist right now too I feel. There is a shift in the world. A better understanding of how we are all connected and therefore strong. Let's see what the future holds, with heroes like Robbin I'm hopeful...



*William L. Warren and Enrike Llamas. PHOTO CREDIT: Lizzy Kimball.*

The Road is always wonderful. They bring new voices and new work to us again and again with artistic integrity and a big heart. This new play from the phenomenal Marlow Wyatt is absolutely perfect for them - intelligent, heartfelt and innovative. This is their mantra year after year. How lucky we are to have them in our midst.

## When:

October 11-November 17

Fridays & Saturdays @ 8pm; Sundays @ 2pm

## Where:

The Road Theatre Company

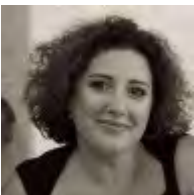
10747 Magnolia Blvd., NoHo Arts District, CA 91601

## The Cast

The cast features Iesha M. Daniels as "Robbin," Enrike Llamas as "Juan," Geri Nikole-Love as "Margaret," Rob Nagle as "Kyle," Joshua R. Lamont as "Charles," and William L. Warren as "Percy."

## The Design Team

Scenic Design by Amanda Knehans; Lighting Design by Derrick McDaniel; Projection Design by Nick Santiago; Sound Design by John Zalewski; Costume Design by Wendell Carmichael, and the Properties Design by Scottie Nevil. The Production Stage Manager is Maurie Gonzalez. *Robbin, From The Hood* is produced by Danna Hyams, Taylor Gilbert and Cherish Monique Duke.



### **Samantha Simmonds-Ronceros**

[https://www.imdb.com/name/nm4303729/?ref\\_=nv\\_sr\\_srsq\\_0](https://www.imdb.com/name/nm4303729/?ref_=nv_sr_srsq_0)

Samantha Simmonds-Ronceros is a writer and Filmmaker living in Los Angeles.